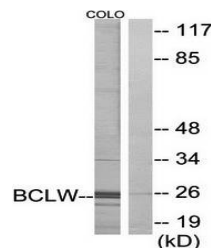


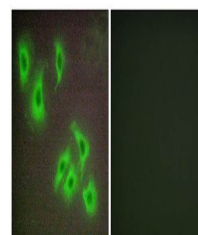
Product Datasheet

LAMA3 antibody (orb128272)

Description	Rabbit Polyclonal to LAMA3.
Species/Host	Rabbit
Reactivity	Human, Mouse, Rat
Conjugation	Unconjugated
Tested Applications	IF, WB
Immunogen	C-terminal
Concentration	1mg/ml
Storage	Maintain refrigerated at 2-8°C for up to 2 weeks. For long term storage store at -20°C in small aliquots to prevent freeze-thaw cycles.
Note	For research use only
Clonality	Polyclonal
Uniprot ID	Q92843
Dilution Range	WB: 1:500-1:3000, IF/ICC: 1:100-1:500, ELISA: 1:10000
Expiration Date	12 months from date of receipt.



Western blot analysis of extracts from C...



Confocal immunofluorescence analysis of ...