

Product Datasheet

Estrogen Receptor-alpha (phospho-Ser102) antibody (orb128043)

Description Rabbit Polyclonal to Estrogen Receptor-alpha (phospho-Ser102).

Species/Host Rabbit

Reactivity Human, Mouse, Rat

Conjugation Unconjugated

Tested Applications IHC

Immunogen Internal

Concentration 1mg/ml

Storage Maintain refrigerated at 2-8°C for up to 2 weeks. For long term storage store at -20°C in small aliquots to prevent freeze-thaw cycles.

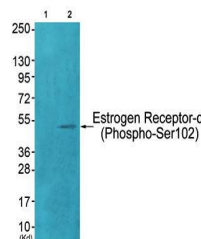
Note For research use only

Clonality Polyclonal

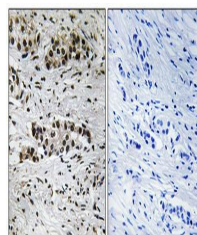
Uniprot ID [P03372](#)

Dilution Range WB: 1:500-3000, IHC-P: 1:50-1:100, ELISA: 1:1000

Expiration Date 12 months from date of receipt.



Western blot analysis of extracts from H...



Immunohistochemical analysis of formalin...