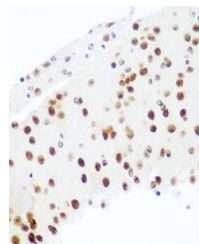


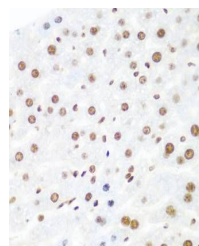
Product Datasheet

EIF2C2 antibody (orb12795)

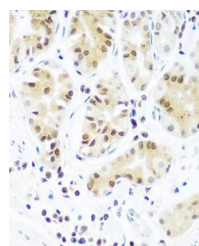
| | |
|----------------------------|---|
| Description | Rabbit polyclonal antibody to EIF2C2 |
| Reactivity | Human, Mouse, Rat |
| Conjugation | Unconjugated |
| Tested Applications | IHC, WB |
| Immunogen | A synthetic peptide of human Argonaute-2(NP_036286.2). |
| Preservatives | PBS with 0.02% sodium azide,50% glycerol,pH7.3. |
| Storage | Maintain refrigerated at 2-8°C for up to 2 weeks. For long term storage store at -20°C in small aliquots to prevent freeze-thaw cycles. |
| Note | For research use only |
| Isotype | IgG |
| Clonality | Polyclonal |
| MW | 97kDa |
| Uniprot ID | Q9UKV8 |
| Dilution Range | WB: 1:500-1:1000 |
| Expiration Date | 12 months from date of receipt. |



Immunohistochemical staining of mouse brain tissue.



Immunohistochemical staining of mouse liver tissue.



Immunohistochemical staining of human tissue.