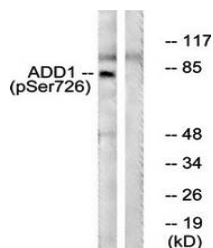


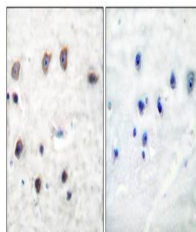
Product Datasheet

ADD1 (phospho-Ser726) antibody (orb127646)

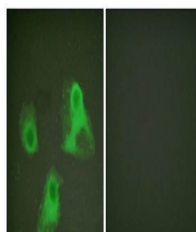
| | |
|----------------------------|---|
| Description | Rabbit polyclonal antibody to ADD1 (phospho-Ser726). |
| Species/Host | Rabbit |
| Reactivity | Human, Mouse, Rat |
| Conjugation | Unconjugated |
| Tested Applications | IF, IHC, WB |
| Immunogen | C-terminal |
| Concentration | 1mg/ml |
| Storage | Maintain refrigerated at 2-8°C for up to 2 weeks. For long term storage store at -20°C in small aliquots to prevent freeze-thaw cycles. |
| Note | For research use only |
| Clonality | Polyclonal |
| Uniprot ID | P35612, P35611 |
| Dilution Range | WB: 1:500-3000, IHC-P: 1:50-100, IF/ICC: 1:100-1:500, ELISA: 1:40000 |
| Expiration Date | 12 months from date of receipt. |



Western blot analysis of extracts from H...



Immunohistochemical analysis of formali-...



Confocal immunofluorescence analysis of ...