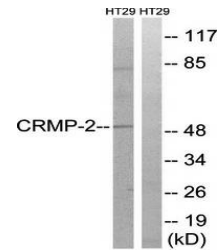


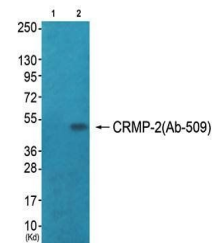
Product Datasheet

CRMP-2 antibody (orb127527)

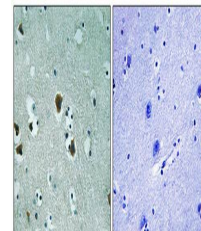
Description	Rabbit polyclonal antibody to CRMP-2
Species/Host	Rabbit
Reactivity	Human, Mouse, Rat
Conjugation	Unconjugated
Tested Applications	IHC, WB
Immunogen	C-terminal
Concentration	1mg/ml
Storage	Maintain refrigerated at 2-8°C for up to 2 weeks. For long term storage store at -20°C in small aliquots to prevent freeze-thaw cycles.
Note	For research use only
Clonality	Polyclonal
Uniprot ID	Q16555
Dilution Range	WB: 1:500-1:3000, IHC-P: 1:50-1:100, ELISA: 1:20000
Expiration Date	12 months from date of receipt.



Western blot analysis of extracts from H...



Western blot analysis of extracts from C...



Immunohistochemical analysis of formalin...