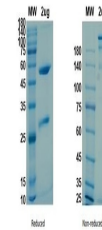


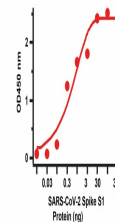
## Product Datasheet

# Recombinant SARS-CoV-2 (COVID-19) (S1) -1 Antibody [CR3022] (orb1274599)

<b>Description</b>	Recombinant SARS-CoV-2 (COVID-19) (S1) -1 Antibody [CR3022]
<b>Species/Host</b>	Human
<b>Reactivity</b>	Virus
<b>Conjugation</b>	Unconjugated
<b>Tested Applications</b>	ELISA
<b>Immunogen</b>	Recombinant SARS-CoV-2 S1 protein
<b>Preservatives</b>	PBS,pH7.5
<b>Form/Appearance</b>	Liquid
<b>Concentration</b>	batch dependent
<b>Storage</b>	Use a manual defrost freezer and avoid repeated freeze thaw cycles. Store at 2 to 8 °C for 1-2 weeks. Store at -20 °C for 12 months. Store at -80 °C for long term storage.
<b>Note</b>	For research use only
<b>Application notes</b>	ELISA:1:5000-1:10000
<b>Isotype</b>	Human IgG1
<b>Clonality</b>	Recombinant
<b>Dilution Range</b>	ELISA:1:5000-1:10000
<b>Expiration Date</b>	12 months from date of receipt.



Coomassie blue staining non-reduced and ...



Sandwich ELISA for SARS-CoV-2 (COVID-19)...