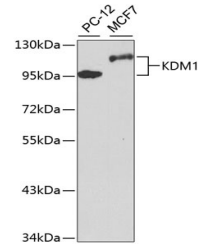


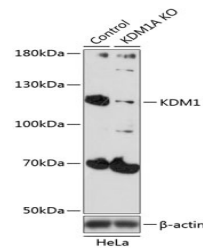
Product Datasheet

KDM1A Antibody (orb1274534)

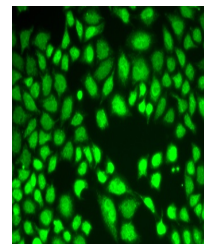
Description	KDM1A Antibody
Species/Host	Rabbit
Reactivity	Human, Mouse, Rat
Conjugation	Unconjugated
Tested Applications	IF, IP, WB
Immunogen	Recombinant fusion protein containing a sequence corresponding to amino acids 130-380 of human KDM1 (NP_055828.2).
Target	KDM1A
Preservatives	Liquid
Form/Appearance	Liquid
Concentration	batch dependent
Storage	Store at -20°C. Avoid freeze / thaw cycles.
Note	For research use only
Application notes	WB: 1:500 - 1:2000IF: 1:50 - 1:100IP: 1:50 - 1:100
Isotype	IgG
Clonality	Polyclonal
MW	Observed: 96-117kDa
Uniprot ID	O60341
Dilution Range	WB: 1:500 - 1:2000IF: 1:50 - 1:100IP: 1:50 - 1:100
Expiration Date	12 months from date of receipt.



Western blot analysis of extracts of var...



Western blot analysis of extracts from n...



Immunofluorescence analysis of A549 cell...