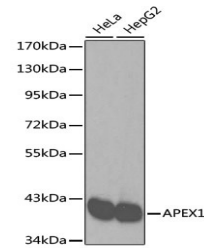


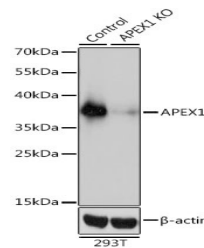
Product Datasheet

APEX1 Antibody (orb1274460)

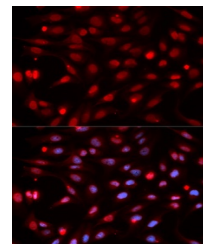
Description	APEX1 Antibody
Species/Host	Rabbit
Reactivity	Human
Conjugation	Unconjugated
Tested Applications	IF, IP, WB
Immunogen	Recombinant fusion protein containing a sequence corresponding to amino acids 1-318 of human APEX1 (NP_542380.1).
Target	APEX1
Preservatives	Liquid
Form/Appearance	Liquid
Concentration	batch dependent
Storage	Store at -20°C. Avoid freeze / thaw cycles.
Note	For research use only
Application notes	WB: 1:500 - 1:2000IF: 1:50 - 1:100IP: 1:50 - 1:200
Isotype	IgG
Clonality	Polyclonal
MW	Observed: 39kDa
Uniprot ID	P27695
Dilution Range	WB: 1:500 - 1:2000IF: 1:50 - 1:100IP: 1:50 - 1:200
Expiration Date	12 months from date of receipt.



Western blot analysis of extracts of var...



Western blot analysis of extracts from n...



Immunofluorescence analysis of HeLa cell...