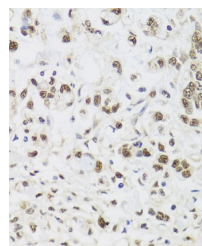


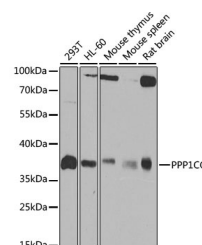
Product Datasheet

PPP1CC Antibody (orb1274456)

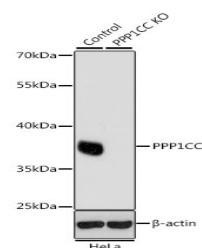
Description	PPP1CC Antibody
Species/Host	Rabbit
Reactivity	Human, Mouse, Rat
Conjugation	Unconjugated
Tested Applications	ChIP, IHC, WB
Immunogen	Recombinant fusion protein containing a sequence corresponding to amino acids 1-323 of human PPP1CC (NP_002701.1).
Target	PPP1CC
Preservatives	Liquid
Form/Appearance	Liquid
Concentration	batch dependent
Storage	Store at -20°C. Avoid freeze / thaw cycles.
Note	For research use only
Application notes	WB: 1:200 - 1:2000 IHC: 1:50 - 1:200 CHIP: 1:50 - 1:200
Isotype	IgG
Clonality	Polyclonal
MW	Observed: 38kDa
Uniprot ID	P36873
Dilution Range	WB: 1:200 - 1:2000 IHC: 1:50 - 1:200 CHIP: 1:50 - 1:200
Expiration Date	12 months from date of receipt.



Immunohistochemistry of paraffin-embedde...



Western blot analysis of extracts of var...



Western blot analysis of extracts from n...