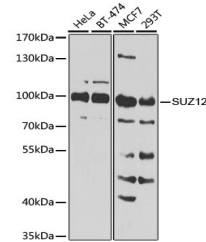


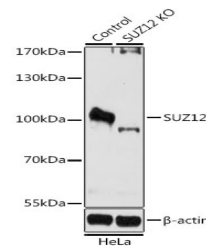
Product Datasheet

SUZ12 Antibody (orb1274421)

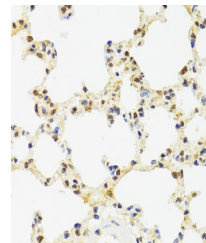
Description	SUZ12 Antibody
Species/Host	Rabbit
Reactivity	Human, Mouse, Rat
Conjugation	Unconjugated
Tested Applications	IF, IHC, IP, WB
Immunogen	Recombinant fusion protein containing a sequence corresponding to amino acids 470-739 of human SUZ12 (NP_056170.2).
Target	SUZ12
Preservatives	Liquid
Form/Appearance	Liquid
Concentration	batch dependent
Storage	Store at -20°C. Avoid freeze / thaw cycles.
Note	For research use only
Application notes	WB: 1:500 - 1:2000 IHC: 1:50 - 1:200 IF: 1:50 - 1:100 IP: 1:50 - 1:100
Isotype	IgG
Clonality	Polyclonal
MW	Observed: 83kDa
Uniprot ID	Q15022
Dilution Range	WB: 1:500 - 1:2000 IHC: 1:50 - 1:200 IF: 1:50 - 1:100 IP: 1:50 - 1:100
Expiration Date	12 months from date of receipt.



Western blot analysis of extracts of var...



Western blot analysis of extracts from n...



Immunohistochemistry of paraffin-embedde...