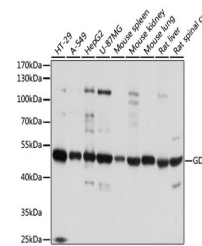


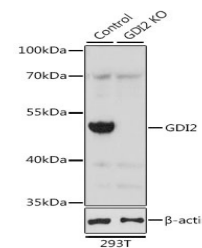
Product Datasheet

GDI2 Antibody (orb1274409)

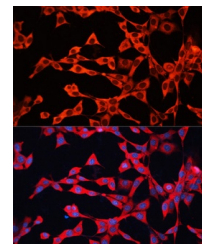
Description	GDI2 Antibody
Species/Host	Rabbit
Reactivity	Human, Mouse, Rat
Conjugation	Unconjugated
Tested Applications	IF, WB
Immunogen	Recombinant fusion protein containing a sequence corresponding to amino acids 296-445 of human GDI2 (NP_001485.2).
Target	GDI2
Preservatives	Liquid
Form/Appearance	Liquid
Concentration	batch dependent
Storage	Store at -20°C. Avoid freeze / thaw cycles.
Note	For research use only
Application notes	WB: 1:200 - 1:3000IF: 1:50 - 1:100
Isotype	IgG
Clonality	Polyclonal
MW	Observed: 51kDa
Uniprot ID	P50395
Dilution Range	WB: 1:200 - 1:3000IF: 1:50 - 1:100
Expiration Date	12 months from date of receipt.



Western blot analysis of extracts of var...



Western blot analysis of extracts from n...



Immunofluorescence analysis of NIH/3T3 C...