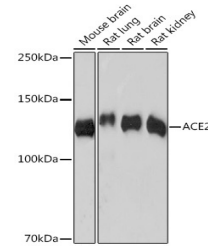


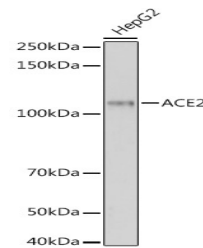
Product Datasheet

ACE2 Antibody (orb1274388)

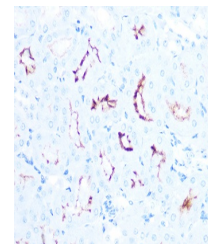
Description	ACE2 Antibody
Species/Host	Rabbit
Reactivity	Virus
Conjugation	Unconjugated
Tested Applications	IHC, WB
Immunogen	Synthetic Peptide
Target	ACE2
Preservatives	Liquid
Form/Appearance	Liquid
Concentration	batch dependent
Storage	Store at 4˚°C short term. Aliquot and store at -20˚°C long term. Avoid freeze-thaw cycles.
Note	For research use only
Application notes	WB: 1:500 - 1:2000, IHC: 1:50 - 1:200
Isotype	IgG
Clonality	Recombinant
Uniprot ID	Q9BYF1
NCBI	Q9BYF1
Dilution Range	WB: 1:500 - 1:2000, IHC: 1:50 - 1:200
Expiration Date	12 months from date of receipt.



Western Blot
Validation in Mouse
and Rat...



Western Blot
Validation in HepG2
Cells. ...



Immunohistochemistry
Validation of ACE2 ...