

Product Datasheet

IL-2 Antibody [1Q8G7] (orb1274380)

Description	IL-2 Antibody [1Q8G7]
Species/Host	Rabbit
Reactivity	Virus
Conjugation	Unconjugated
Tested Applications	ELISA
Immunogen	Recombinant Human IL2 Protein, amino acids Ala21-Thr153
Target	IL2
Preservatives	Liquid
Form/Appearance	Liquid
Concentration	1mg/ml
Storage	Maintain refrigerated at 2-8°C for up to 2 weeks. For long term storage store at -20°C in small aliquots to prevent freeze-thaw cycles.
Note	For research use only
Application notes	Human IL-2 Sandwich ELISA Immunoassay: ELISA Capture: Recommended Concentration: 2-8ug/mL, Sample: Human IL-2 Monoclonal Antibody, Rabbit MAb (CAP) ELISA Detection: Recommended Concentration: 0.15-0.5ug/mL, Sample: Human IL-2 Monoclonal Antibody, Rabbit MAb (DET) Standard: Recommended Concentration: 0.78-50pg/mL, Sample: Recombinant Human IL2 Protein
Isotype	Rabbit IgG
Clonality	Recombinant
Clone Number	1Q8G7

Biorbyt Ltd.

7 Signet Court, Swann's Road,
Cambridge, CB5 8LA, United Kingdom
Email: info@biorbyt.com, support@biorbyt.com
Phone: [+44 \(0\) 1223 859-353](tel:+44(0)1223859353) | Fax: [+1 \(415\) 651-8558](tel:+1(415)6518558)

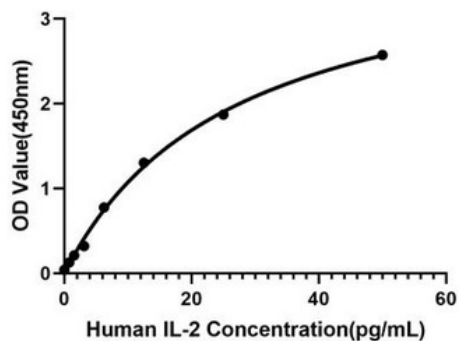
Biorbyt LLC.

68 TW Alexander Drive,
Durham, NC, 27713, United States
Email: info@biorbyt.com, support@biorbyt.com
Phone: [+1 \(415\) 906-5211](tel:+1(415)9065211) | Fax: [+1 \(415\) 651-8558](tel:+1(415)6518558)

Uniprot ID **P60568**

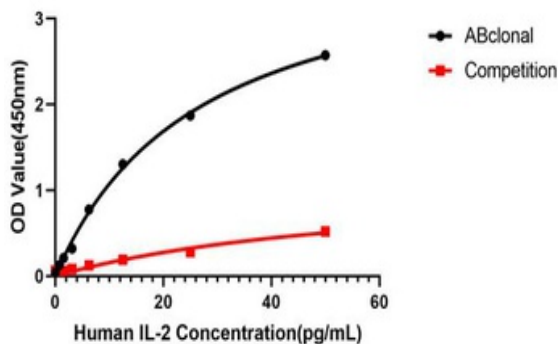
Expiration Date 12 months from date of receipt.

Human IL-2 ELISA Kit



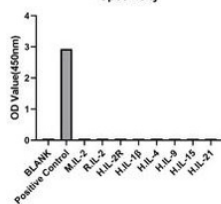
This standard curve is only for demonstration purposes. A standard curve should be generated for each assay.

Human IL-2 ELISA Kit



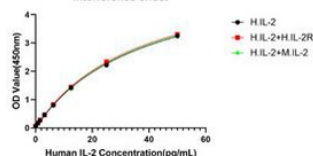
From the comparison of the standard curve, it is found that ProSci has high sensitivity.

Specificity



No significant cross-reactivity or interference was observed.

Interference effect

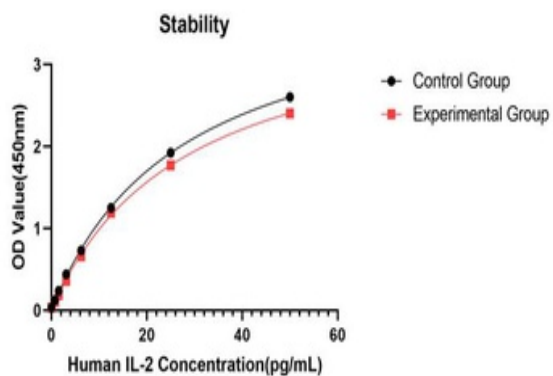


Biorbyt Ltd.

7 Signet Court, Swann's Road,
Cambridge, CB5 8LA, United Kingdom
Email: info@biorbyt.com, support@biorbyt.com
Phone: [+44 \(0\) 1223 859-353](tel:+44(0)1223859353) | Fax: [+1 \(415\) 651-8558](tel:+1(415)6518558)

Biorbyt LLC.

68 TW Alexander Drive,
Durham, NC, 27713, United States
Email: info@biorbyt.com, support@biorbyt.com
Phone: [+1 \(415\) 906-5211](tel:+1(415)9065211) | Fax: [+1 \(415\) 651-8558](tel:+1(415)6518558)



Placed at 37° for 3 days, the stability of the standard curve all conform to CV 10%.

Biorbyt Ltd.

7 Signet Court, Swann's Road,
Cambridge, CB5 8LA, United Kingdom
Email: info@biorbyt.com, support@biorbyt.com
Phone: [+44 \(0\) 1223 859-353](tel:+44(0)1223859353) | Fax: [+1 \(415\) 651-8558](tel:+1(415)6518558)

Biorbyt LLC.

68 TW Alexander Drive,
Durham, NC, 27713, United States
Email: info@biorbyt.com, support@biorbyt.com
Phone: [+1 \(415\) 906-5211](tel:+1(415)9065211) | Fax: [+1 \(415\) 651-8558](tel:+1(415)6518558)