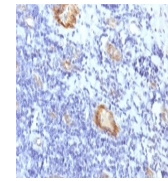


---

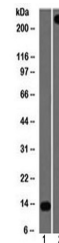
## Product Datasheet

### VWF Antibody (orb1274260)

<b>Description</b>	VWF Antibody
<b>Species/Host</b>	Rabbit
<b>Reactivity</b>	Human
<b>Conjugation</b>	Unconjugated
<b>Tested Applications</b>	IF, IHC-P, WB
<b>Immunogen</b>	Amino acids 1815-1939 from the human protein were used as the immunogen for this recombinant vWF antibody.
<b>Target</b>	VWF
<b>Preservatives</b>	PBS with 0.1 mg/ml rAlbumin and 0.05% sodium azide
<b>Form/Appearance</b>	Liquid
<b>Concentration</b>	0.2 mg/mL
<b>Storage</b>	Aliquot and Store at 2-8°C. Avoid freeze-thaw cycles.
<b>Note</b>	For research use only
<b>Application notes</b>	Western blot: 1-2 ug/ml Immunoprecipitation: 1-2ug/500ug lysate Immunofluorescence: 1-2 ug/ml Immunohistochemistry (FFPE): 1-2 ug/ml for 30 minutes at RT The optimal dilution of the recombinant vWF antibody for each application should be determined by the researcher. 1. The prediluted format is supplied in a dropper bottle and is optimized for use in IHC. After epitope retrieval step (if required), drip mAb solution onto the tissue section and incubate at RT for 30 min.
<b>Isotype</b>	IgG, k
<b>Clonality</b>	Recombinant
<b>Uniprot ID</b>	<a href="#">P04275</a>
<b>Dilution Range</b>	Western blot: 1-2 ug/ml Immunoprecipitation: 1-2ug/500ug lysate Immunofluorescence: 1-2 ug/ml Immunohistochemistry (FFPE): 1-2 ug/ml for 30 minutes at RT The optimal dilution of the recombinant vWF antibody for each application should be determined by the researcher. 1. The prediluted format is supplied in a dropper bottle and is optimized for use in IHC. After epitope retrieval step (if required), drip mAb solution onto the tissue section and incubate at RT for 30 min.
<b>Expiration Date</b>	12 months from date of receipt.



IHC testing of FFPE human tonsil with re...



Western blot testing of 1) partial recom...