
Product Datasheet

MLANA Antibody (orb1274253)

Description

MLANA Antibody

Species/Host

Rabbit

Reactivity

Human

Conjugation

Unconjugated

Tested

IHC

Applications
Immunogen

Recombinant human protein was used as the immunogen for this MART-1 antibody.

Target

MLANA

Preservatives

PBS with 0.1 mg/ml rAlbumin and 0.05% sodium azide

Form/Appearance

Liquid

Concentration

0.2 mg/mL

Storage

Aliquot and Store at 2-8°C. Avoid freeze-thaw cycles.

Note

For research use only

Application notes

Immunohistochemistry (FFPE): 0.5-1 ug/ml for 30 minutes at RT (1)The optimal dilution of the MART-1 antibody for each application should be determined by the researcher.1. Staining of formalin-fixed tissues is enhanced by boiling tissue sections in 10mM Citrate Buffer, pH 6.0, for 10-20 min followed by cooling at RT for 20 minutes.

Isotype

IgG, k

Clonality

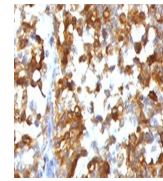
Recombinant

Uniprot ID
[Q16655](#)
Dilution Range

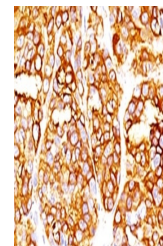
Immunohistochemistry (FFPE): 0.5-1 ug/ml for 30 minutes at RT (1)The optimal dilution of the MART-1 antibody for each application should be determined by the researcher.1. Staining of formalin-fixed tissues is enhanced by boiling tissue sections in 10mM Citrate Buffer, pH 6.0, for 10-20 min followed by cooling at RT for 20 minutes.

Expiration Date

12 months from date of receipt.



Formalin-fixed, paraffin-embedded human ...



Formalin-fixed, paraffin-embedded human ...