

---

## Product Datasheet

### CNN1 Antibody (orb1274242)

**Description**

CNN1 Antibody

**Species/Host**

Rabbit

**Reactivity**

Human, Rat

**Conjugation**

Unconjugated

**Tested Applications**

FC, IF, IHC-P

**Immunogen**

Recombinant human protein was used as the immunogen for the recombinant Calponin antibody.

**Target**

CNN1

**Preservatives**

PBS with 0.1 mg/ml rAlbumin and 0.05% sodium azide

**Form/Appearance**

Liquid

**Concentration**

0.2 mg/mL

**Storage**

Aliquot and Store at 2-8°C. Avoid freeze-thaw cycles.

**Note**

For research use only

**Application notes**

Flow Cytometry: 0.5-1ug/10<sup>6</sup> cells  
 Immunofluorescence: 0.5-1 ug/ml  
 Immunohistochemistry (FFPE): 1-2 ug/ml for 30 min at RT  
 Prediluted IHC only format: incubate for 30 min at RT (1)  
 Optimal dilution of the recombinant Calponin antibody should be determined by the researcher.1. The prediluted format is supplied in a dropper bottle and is optimized for use in IHC. After epitope retrieval step (if required), drip mAb solution onto the tissue section and incubate at RT for 30 min.

**Isotype**

IgG, k

**Clonality**

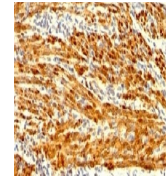
Recombinant

**Uniprot ID**
**P51911**
**Dilution Range**

Flow Cytometry: 0.5-1ug/10<sup>6</sup> cells  
 Immunofluorescence: 0.5-1 ug/ml  
 Immunohistochemistry (FFPE): 1-2 ug/ml for 30 min at RT  
 Prediluted IHC only format: incubate for 30 min at RT (1)  
 Optimal dilution of the recombinant Calponin antibody should be determined by the researcher.1. The prediluted format is supplied in a dropper bottle and is optimized for use in IHC. After epitope retrieval step (if required), drip mAb solution onto the tissue section and incubate at RT for 30 min.

**Expiration Date**

12 months from date of receipt.



IHC testing of FFPE human uterus stained...



IHC testing of FFPE rat uterus stained w...