
Product Datasheet

IGHG1 Antibody (orb1274241)

Description

IGHG1 Antibody

Species/Host

Rabbit

Reactivity

Human

Conjugation

Unconjugated

Tested Applications

FC, IF, IHC-P, WB

Immunogen

Human Ig Gamma Chain was used as the immunogen for this recombinant IgG antibody.

Target

IGHG1

Preservatives

PBS with 0.1 mg/ml rAlbumin and 0.05% sodium azide

Form/Appearance

Liquid

Concentration

0.2 mg/mL

Storage

Aliquot and Store at 2-8°C. Avoid freeze-thaw cycles.

Note

For research use only

Application notes

Flow Cytometry: 0.5-1 ug/million cells in 0.1ml
 Immunofluorescence: 0.5-1 ug/ml
 Immunohistochemistry (FFPE): 0.5-1 ug/ml for 30 min at RT
 Prediluted IHC only format: incubate for 30 min at RT
 (1)The optimal dilution of the recombinant IgG antibody for each application should be determined by the researcher.
 1. The prediluted format is supplied in a dropper bottle and is optimized for use in IHC. After epitope retrieval step (if required), drip mAb solution onto the tissue section and incubate at RT for 30 min.

Isotype

IgG, kappa

Clonality

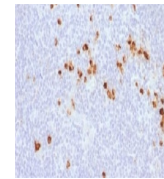
Recombinant

Uniprot ID
P01857
Dilution Range

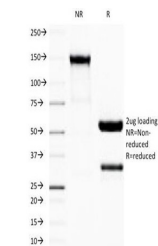
Flow Cytometry: 0.5-1 ug/million cells in 0.1ml
 Immunofluorescence: 0.5-1 ug/ml
 Immunohistochemistry (FFPE): 0.5-1 ug/ml for 30 min at RT
 Prediluted IHC only format: incubate for 30 min at RT
 (1)The optimal dilution of the recombinant IgG antibody for each application should be determined by the researcher.
 1. The prediluted format is supplied in a dropper bottle and is optimized for use in IHC. After epitope retrieval step (if required), drip mAb solution onto the tissue section and incubate at RT for 30 min.

Expiration Date

12 months from date of receipt.



IHC testing of FFPE human tonsil with re...



SDS-PAGE Analysis of Purified, BSA-Free ...