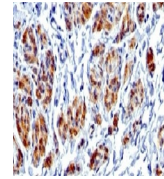


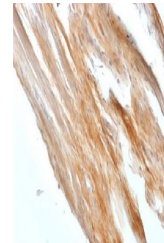
## Product Datasheet

### CALD1 Antibody (orb1274240)

<b>Description</b>	CALD1 Antibody
<b>Species/Host</b>	Rabbit
<b>Reactivity</b>	Human, Rat
<b>Conjugation</b>	Unconjugated
<b>Tested Applications</b>	FC, IF, IHC-P
<b>Immunogen</b>	A full length human protein was used as the immunogen for the recombinant Caldesmon antibody.
<b>Target</b>	CALD1
<b>Preservatives</b>	PBS with 0.1 mg/ml rAlbumin and 0.05% sodium azide
<b>Form/Appearance</b>	Liquid
<b>Concentration</b>	0.2 mg/mL
<b>Storage</b>	Aliquot and Store at 2-8°C. Avoid freeze-thaw cycles.
<b>Note</b>	For research use only
<b>Application notes</b>	Flow Cytometry: 0.5-1ug/10 <sup>6</sup> cells Immunofluorescence: 1-2 ug/ml Immunohistochemistry (FFPE): 1-2 ug/ml for 30 min at RT Prediluted IHC only format: incubate for 30 min at RT (1) Titration of the recombinant Caldesmon antibody may be required for optimal performance.1. The prediluted format is supplied in a dropper bottle and is optimized for use in IHC. After epitope retrieval step (if required), drip mAb solution onto the tissue section and incubate at RT for 30 min.
<b>Isotype</b>	IgG, k
<b>Clonality</b>	Recombinant
<b>Uniprot ID</b>	<a href="#">Q05682</a>
<b>Dilution Range</b>	Flow Cytometry: 0.5-1ug/10 <sup>6</sup> cells Immunofluorescence: 1-2 ug/ml Immunohistochemistry (FFPE): 1-2 ug/ml for 30 min at RT Prediluted IHC only format: incubate for 30 min at RT (1) Titration of the recombinant Caldesmon antibody may be required for optimal performance.1. The prediluted format is supplied in a dropper bottle and is optimized for use in IHC. After epitope retrieval step (if required), drip mAb solution onto the tissue section and incubate at RT for 30 min.
<b>Expiration Date</b>	12 months from date of receipt.



IHC testing of FFPE human uterus with re...



IHC testing of FFPE rat uterus with reco...