
Product Datasheet

Recombinant CA19-9 Antibody [CA19.9/1390R] (orb1274237)

Description

Recombinant CA19-9 Antibody [CA19.9/1390R]


Species/Host

Rabbit

Reactivity

Human

Conjugation

Unconjugated

Tested Applications

FC, IF, IHC-P, WB

Immunogen

Purified human protein used as the immunogen for the recombinant CA19-9 antibody.

Preservatives

PBS with 0.1 mg/ml rAlbumin and 0.05% sodium azide

Form/Appearance

Liquid

Concentration

0.2 mg/mL

Storage

Aliquot and Store at 2-8°C. Avoid freeze-thaw cycles.

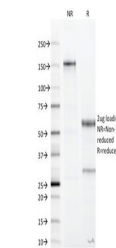
Note

For research use only

Application notes

Flow Cytometry: 2-4 ug/million cells in 0.1ml
 Immunofluorescence: 5-10 ug/ml
 Immunohistochemistry (FFPE): 5-10 ug/ml for 30 min at RT
 Prediluted IHC only format: incubate for 30 min at RT (1)
 Optimal dilution of the recombinant CA19-9 antibody should be determined by the researcher.1. The prediluted format is supplied in a dropper bottle and is optimized for use in IHC. After epitope retrieval step (if required), drip mAb solution onto the tissue section and incubate at RT for 30 min.

IHC testing of FFPE human gastric carcin...



SDS-PAGE Analysis of Purified, BSA-Free ...

Isotype

IgG, k

Clonality

Recombinant

Uniprot ID

NotKnown

Dilution Range

Flow Cytometry: 2-4 ug/million cells in 0.1ml
 Immunofluorescence: 5-10 ug/ml
 Immunohistochemistry (FFPE): 5-10 ug/ml for 30 min at RT
 Prediluted IHC only format: incubate for 30 min at RT (1)
 Optimal dilution of the recombinant CA19-9 antibody should be determined by the researcher.1. The prediluted format is supplied in a dropper bottle and is optimized for use in IHC. After epitope retrieval step (if required), drip mAb solution onto the tissue section and incubate at RT for 30 min.

Expiration Date

12 months from date of receipt.