

---

## Product Datasheet

### WT1 Antibody (orb1274231)

**Description**

WT1 Antibody

**Species/Host**

Rabbit

**Reactivity**

Human, Rat

**Conjugation**

Unconjugated

**Tested Applications**

FC, IF, IHC-P

**Applications**
**Immunogen**

A recombinant protein was used as the immunogen for the recombinant WT1 antibody.

**Target**

WT1

**Preservatives**

PBS with 0.1 mg/ml rAlbumin and 0.05% sodium azide

**Form/Appearance**

Liquid

**Concentration**

0.2 mg/mL

**Storage**

Aliquot and Store at 2-8°C. Avoid freeze-thaw cycles.

**Note**

For research use only

**Application notes**

Flow Cytometry: 0.5-1ug/10e6 cells in 0.1ml  
 Immunofluorescence: 0.5-1 ug/ml  
 Immunohistochemistry (FFPE): 0.5-1 ug/ml for 30 min at RT  
 Prediluted IHC only format: incubate for 30 min at RT  
 (1)Optimal dilution of the recombinant WT1 antibody should be determined by the researcher.1. The prediluted format is supplied in a dropper bottle and is optimized for use in IHC. After epitope retrieval step (if required), drip mAb solution onto the tissue section and incubate at RT for 30 min.

**Isotype**

IgG, k

**Clonality**

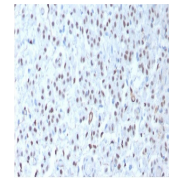
Recombinant

**Uniprot ID**
[P19544](#)
**Dilution Range**

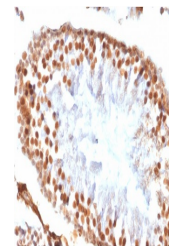
Flow Cytometry: 0.5-1ug/10e6 cells in 0.1ml  
 Immunofluorescence: 0.5-1 ug/ml  
 Immunohistochemistry (FFPE): 0.5-1 ug/ml for 30 min at RT  
 Prediluted IHC only format: incubate for 30 min at RT  
 (1)Optimal dilution of the recombinant WT1 antibody should be determined by the researcher.1. The prediluted format is supplied in a dropper bottle and is optimized for use in IHC. After epitope retrieval step (if required), drip mAb solution onto the tissue section and incubate at RT for 30 min.

**Expiration Date**

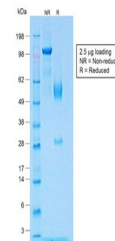
12 months from date of receipt.



IHC testing of FFPE human mesothelioma t...



IHC testing of FFPE rat testis tissue wi...



SDS-PAGE analysis of purified, BSA-free ...