

---

## Product Datasheet

### SARS-CoV-2 Nucleocapsid Antibody, monoclonal (orb1274212)

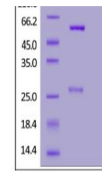
**Description**

SARS-CoV-2 Nucleocapsid Antibody, monoclonal

kDa M R NR

**Reactivity**

Human


**Conjugation**

Unconjugated

**Tested Applications**

ELISA, WB

**Immunogen**

Anti-SARS-CoV-2 Nucleocapsid Antibody, Human IgG1 is isolated from a SARS-CoV-2 infected patient and is recombinantly produced from human 293 cells (HEK293).

Anti-SARS-CoV-2 Nucleocapsid Antibody, H...

**Target**

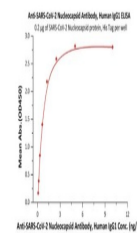
N

**Preservatives**

Lyophilized from 0.22  $\mu$ m filtered solution in PBS, pH 7.4 . Normally trehalose is added as protectant before lyophilization.

**Form/Appearance**

Lyophilized


**Concentration**

batch dependent

**Storage**

For long term storage, the product should be stored at lyophilized state at -20°C or lower..Please avoid repeated freeze-thaw cycles.This product is stable after storage at:.-20 to -70°C for 12 months in lyophilized state from date of receipt;.-70°C for 3 months under sterile conditions after reconstitution.

Immobilized SARS-CoV-2 Nucleocapsid prot...

**Note**

For research use only

**Application notes**

This antibody can be paired with other Anti-SARS-CoV-2 Nucleocapsid antibodies to detect SARS-CoV-2 Nucleocapsid protein in sandwich ELISA or LFA assay.

**Isotype**

Human IgG1/kappa

**Clonality**

Recombinant

**Uniprot ID**
**P0DTC9**
**Dilution Range**

This antibody can be paired with other Anti-SARS-CoV-2 Nucleocapsid antibodies to detect SARS-CoV-2 Nucleocapsid protein in sandwich ELISA or LFA assay.

**Expiration Date**

12 months from date of receipt.