
Product Datasheet

CD274 Antibody (orb1274198)

Description

CD274 Antibody

Species/Host

Camelus

Reactivity

Human

Conjugation

Unconjugated

Tested

FC, ICC

Applications
Immunogen

PD-L1 antibody was raised against a recombinant protein corresponding to amino acids 19 - 239 of human PD-L1.

Target

CD274

Preservatives

PD-L1 Antibody is supplied in PBS.

Form/Appearance

Liquid

Concentration

1 mg/mL

Storage

PD-L1 antibody should be stored in working aliquots at -20°C, stable for up to one year. As with all antibodies care should be taken to avoid repeated freeze thaw cycles. Antibodies should not be exposed to prolonged high temperatures.

Note

For research use only

Application notes

PD-L1 antibody can be used for detection of PD-L1 by Flow Cytometry and Immunocytochemistry at 10 µg/ml.

Isotype

sdAb

Clonality

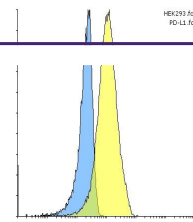
Recombinant

Uniprot ID
[Q9NZQ7](#)
NCBI
[NP_054862](#)
Dilution Range

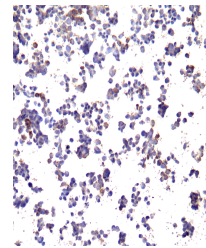
PD-L1 antibody can be used for detection of PD-L1 by Flow Cytometry and Immunocytochemistry at 10 µg/ml.

Expiration Date

12 months from date of receipt.



Flow cytometry analysis of PD-L1 transfe...



Immunocytochemistry of PD-L1 in transfec...