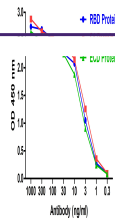

Product Datasheet

**SARS-CoV-2 (COVID-19) S1 RBD Single Domain
Antibody [RBD-2B9] (orb1274196)**

Description

SARS-CoV-2 (COVID-19) S1 RBD Single


Species/Host

Camelus

Reactivity

Virus

Conjugation

Unconjugated

Tested Applications

ELISA

 ELISA
Validation
with
SARS-CoV-
2 (COVID-
2
...

Immunogen

SARS-CoV-2 S protein RBD containing C-terminal His Tag. The protein was expressed in human 293 cells (HEK293). It contains amino acids Arg 319 - Lys 537.

Target

S

Preservatives

SARS-CoV-2 (COVID-19) S1 RBD Antibody [RBD-2B9] Antibody is supplied in PBS.

Form/Appearance

Liquid

Concentration

batch dependent

Storage

SARS-CoV-2 (COVID-19) S1 RBD antibody should be stored in working aliquots at -20°C, stable for up to one year. As with all antibodies care should be taken to avoid repeated freeze thaw cycles. Antibodies should not be exposed to prolonged high temperatures.

Note

For research use only

Isotype

sdAb

Clonality

Recombinant

NCBI
[QHD43419](#)
Expiration Date

12 months from date of receipt.