
Product Datasheet

**SARS-CoV-2 (COVID-19) Spike S2 Single Domain
Antibody [P1B8] (orb1274189)**

Description

SARS-CoV-2 (COVID-19) Spike S2 Single


Species/Host

Camelus

Reactivity

Virus

Conjugation

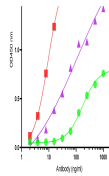
Unconjugated

Tested Applications

ELISA

Immunogen

SARS-CoV-2 Spike S2 protein containing C-terminal His Tag. The protein was expressed in human 293 cells (HEK293). It contains amino acids Ser 686 - Pro 1213.



ELISA
Validation
with Spike
Trimer
Prote...

Target

S

Preservatives

SARS-CoV-2 (COVID-19) Spike S2 Antibody is supplied in PBS.

Form/Appearance

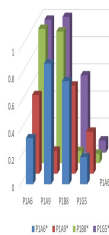
Liquid

Concentration

batch dependent

Storage

SARS-CoV-2 (COVID-19) Spike S2 Antibody should be stored in working aliquots at -20°C, stable for up to one year. As with all antibodies care should be taken to avoid repeated freeze thaw cycles. Antibodies should not be exposed to prolonged high temperatures.



Epitope
Mapping
of four
Spike S2
Antibod...

Note

For research use only

Isotype

sdAb

Clonality

Recombinant

NCBI
[QHD43416](#)
Expiration Date

12 months from date of receipt.