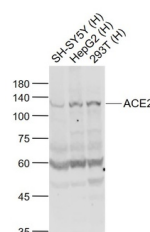


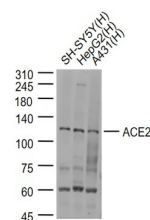
## Product Datasheet

### ACE2 Antibody (orb1274172)

<b>Description</b>	ACE2 Antibody
<b>Species/Host</b>	Rabbit
<b>Reactivity</b>	Virus
<b>Conjugation</b>	Unconjugated
<b>Tested Applications</b>	IF, IHC-P, WB
<b>Immunogen</b>	KLH synthetic peptide derived from human ACE2
<b>Target</b>	ACE2
<b>Preservatives</b>	0.01M TBS (pH7.4) with 1% rAlbumin, 0.03% Proclin300 and 50% Glycerol
<b>Form/Appearance</b>	Liquid
<b>Concentration</b>	≥1 mg/mL
<b>Storage</b>	Store at 4°C short term. Aliquot and store at -20°C long term. Avoid freeze-thaw cycles.
<b>Note</b>	For research use only
<b>Application notes</b>	WB(1:500-2000), IHC-P(1:200-400), IF(IHC-P)(1:50-200)
<b>Isotype</b>	IgG
<b>Clonality</b>	Polyclonal
<b>Uniprot ID</b>	<a href="#">Q9BYF1</a>
<b>NCBI</b>	<a href="#">Q9BYF1</a>
<b>Dilution Range</b>	WB(1:500-2000), IHC-P(1:200-400), IF(IHC-P)(1:50-200)
<b>Expiration Date</b>	12 months from date of receipt.



Western Blot Validation of ACE2. Lane 1:...



Western Blot Validation of ACE2. Lane 1:...