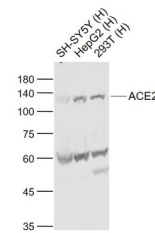


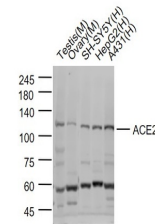
Product Datasheet

ACE2 Antibody (orb1274171)

| | |
|----------------------------|--|
| Description | ACE2 Antibody |
| Species/Host | Rabbit |
| Reactivity | Virus |
| Conjugation | Unconjugated |
| Tested Applications | IF, IHC-P, WB |
| Target | ACE2 |
| Preservatives | 0.01M TBS (pH7.4) with 1% rAlbumin, 0.03% Proclin300 and 50% Glycerol |
| Form/Appearance | Liquid |
| Concentration | ≥1 mg/mL |
| Storage | Store at 4°C short term. Aliquot and store at -20°C long term. Avoid freeze-thaw cycles. |
| Note | For research use only |
| Application notes | WB(1:500-2000), IHC-P(1:200-400), IF(IHC-P)(1:50-200) |
| Isotype | IgG |
| Clonality | Polyclonal |
| Uniprot ID | Q9BYF1 |
| NCBI | Q9BYF1 |
| Dilution Range | WB(1:500-2000), IHC-P(1:200-400), IF(IHC-P)(1:50-200) |
| Expiration Date | 12 months from date of receipt. |



Western Blot Validation of ACE2. Lane 1:...



Western Blot Validation of ACE2. Lane 1:...