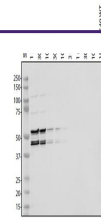

Product Datasheet

SARS-CoV-2 (COVID-19) Envelope Antibody (orb1274120)

Description

SARS-CoV-2 (COVID-19) Envelope Antibody

Species/Host	Sheep
Reactivity	Virus
Conjugation	Unconjugated
Tested Applications	WB
Immunogen	GST-SARS-CoV2 E Protein
Target	E
Preservatives	Antibody supplied in PBS.
Form/Appearance	Liquid
Concentration	batch dependent
Storage	Aliquot and store at -20°C. As with all antibodies care should be taken to avoid repeated freeze thaw cycles. Antibodies should not be exposed to prolonged high temperatures.
Note	For research use only
Application notes	Detection Antibodies: 1 µg/ml Ab, 5% BSA in TBS-T, 4°C overnight Blocking: 5% milk in TBS-T, 1h room temp Secondary Antibodies: 1:15,000 donkey anti-sheep, 1:15,000 donkey anti-mouse, in TBS-T, 1h room temp Wash: TBS-T, 4x 10 min
Clonality	Polyclonal
Uniprot ID	PODTC4
Dilution Range	Detection Antibodies: 1 µg/ml Ab, 5% BSA in TBS-T, 4°C overnight Blocking: 5% milk in TBS-T, 1h room temp Secondary Antibodies: 1:15,000 donkey anti-sheep, 1:15,000 donkey anti-mouse, in TBS-T, 1h room temp Wash: TBS-T, 4x 10 min
Expiration Date	12 months from date of receipt.



Antibody used at 1 µg/mL in WB.