
Product Datasheet

SARS Coronavirus (HSZ-Cc) Envelope Antibody (orb1274109)

Description

SARS Coronavirus (HSZ-Cc) Envelope Antibody

Species/Host

Sheep

Reactivity

Virus

Conjugation

Unconjugated

Tested

WB

Applications
Immunogen

GST-SARS CoV HSZ-Cc E Protein

Target

E

Preservatives

Antibody supplied in PBS.

Form/Appearance

Liquid

Concentration

batch dependent

Storage

Aliquot and store at -20°C. As with all antibodies care should be taken to avoid repeated freeze thaw cycles. Antibodies should not be exposed to prolonged high temperatures.

Note

For research use only

Application notes

Detection Antibodies: 1 µg/ml Ab, 5% BSA in TBS-T, 4°C overnight Blocking: 5% BSA in TBS-T, 1h room temp Secondary Antibodies: 1:15,000 donkey anti-sheep, 1:15,000 donkey anti-rabbit, in TBS-T, 1h room temp Wash: TBS-T, 4x 10 min

Clonality

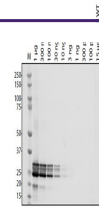
Polyclonal

Uniprot ID
P59637
Dilution Range

Detection Antibodies: 1 µg/ml Ab, 5% BSA in TBS-T, 4°C overnight Blocking: 5% BSA in TBS-T, 1h room temp Secondary Antibodies: 1:15,000 donkey anti-sheep, 1:15,000 donkey anti-rabbit, in TBS-T, 1h room temp Wash: TBS-T, 4x 10 min

Expiration Date

12 months from date of receipt.



Antibody used at 1 µg/mL in WB.