

---

## Product Datasheet

### MERS Coronavirus (HSZ-Cc) Envelope Antibody (orb1274108)

**Description**

MERS Coronavirus (HSZ-Cc) Envelope Antibody

**Species/Host**

Sheep

**Reactivity**

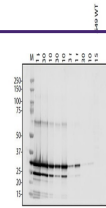
Virus

**Conjugation**

Unconjugated

**Tested**

WB

**Applications**


Antibody used at 1 ug/mL in WB.

**Immunogen**

GST-MERS CoV HSZ-Cc E Protein

**Target**

N

**Preservatives**

Antibody supplied in PBS.

**Form/Appearance**

Liquid

**Concentration**

batch dependent

**Storage**

Aliquot and store at -20°C. As with all antibodies care should be taken to avoid repeated freeze thaw cycles. Antibodies should not be exposed to prolonged high temperatures.

**Note**

For research use only

**Application notes**

Detection Antibodies: 1 µg/ml Ab, 5% BSA in TBS-T, 4°C overnight Blocking: 5% BSA in TBS-T, 1h room temp Secondary Antibodies: 1:15,000 donkey anti-sheep, 1:15,000 donkey anti-rabbit, in TBS-T, 1h room temp Wash: TBS-T, 4x 10 min

**Clonality**

Polyclonal

**Uniprot ID**
**A0A1W5LGD9**
**Dilution Range**

Detection Antibodies: 1 µg/ml Ab, 5% BSA in TBS-T, 4°C overnight Blocking: 5% BSA in TBS-T, 1h room temp Secondary Antibodies: 1:15,000 donkey anti-sheep, 1:15,000 donkey anti-rabbit, in TBS-T, 1h room temp Wash: TBS-T, 4x 10 min

**Expiration Date**

12 months from date of receipt.