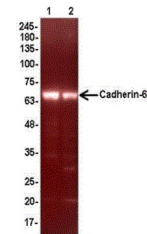


Product Datasheet

CDH6 Antibody (orb1274073)

Description	CDH6 Antibody
Species/Host	Rabbit
Reactivity	Human
Conjugation	Unconjugated
Tested Applications	WB
Immunogen	Synthetic peptide derived from human cadherin-6 (IHDINDNEPIFTK)
Target	CDH6
Preservatives	PBS, pH 7.2, 0.02% NaN3
Concentration	batch dependent
Storage	Store at 4°C for up to 6 months. Store at -20°C long term.
Note	For research use only
Application notes	WB, dilution (1:1000 - 1: 5000).
Isotype	Recombinant Rabbit IgG / light chain kappa
Clonality	Monoclonal
Uniprot ID	P55285
Dilution Range	WB, dilution (1:1000 - 1: 5000).
Expiration Date	12 months from date of receipt.



Antibody:
orb1274073
at 1/1000
dilution ...