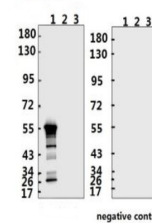


Product Datasheet

SARS-CoV-2 (COVID-19) Nucleocapsid Antibody (IN) (orb1274050)

Description	SARS-CoV-2 (COVID-19) Nucleocapsid Antibody (IN)
Species/Host	Rabbit
Reactivity	Virus
Conjugation	Unconjugated
Tested Applications	ELISA, WB
Immunogen	Synthetic peptide located within the center of SARS-CoV-2 (COVID-19) Nucleocapsid.
Target	N
Preservatives	PBS with 0.02% sodium azide, 10% glycerol, pH 7.2
Form/Appearance	Liquid
Concentration	batch dependent
Storage	Store at 4°C short term. Aliquot and store at -20°C long term. Avoid freeze-thaw cycles.
Note	For research use only
Application notes	WB: 1:500-1000
Isotype	IgG
Clonality	Polyclonal
NCBI	QHD43423.2
Dilution Range	WB: 1:500-1000
Expiration Date	12 months from date of receipt.



Western Blot Validation with Recombinant...

ELISA experiment

	1	
A	1.957	:1:100
B	1.975	:1:200
C	1.638	:1:500
D	1.131	:1:1000
E	0.574	:1:5000
F	0.602	:1:10000
G	0.557	:1:20000
H	0.136	Blank control

ELISA Test. Coating original concentration...