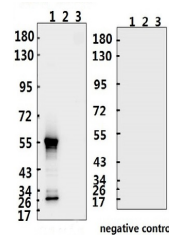


Product Datasheet

SARS-CoV-2 (COVID-19) Nucleocapsid Antibody (CT) (orb1274049)

Description	SARS-CoV-2 (COVID-19) Nucleocapsid Antibody (CT)
Species/Host	Rabbit
Reactivity	Virus
Conjugation	Unconjugated
Tested Applications	ELISA, WB
Immunogen	Synthetic peptide located within the C terminus of SARS-CoV-2 (COVID-19) Nucleocapsid.
Target	N
Preservatives	PBS with 0.02% sodium azide, 10% glycerol, pH 7.2
Form/Appearance	Liquid
Concentration	batch dependent
Storage	Store at 4°C short term. Aliquot and store at -20°C long term. Avoid freeze-thaw cycles.
Note	For research use only
Application notes	WB: 1:500-1000
Isotype	IgG
Clonality	Polyclonal
NCBI	QHD43423.2
Dilution Range	WB: 1:500-1000
Expiration Date	12 months from date of receipt.



Western Blot Validation with Recombinant...

ELISA experiment

	1	
A	0.801	1:100
B	0.9	1:200
C	0.648	1:500
D	0.556	1:1000
E	0.367	1:5000
F	0.509	1:10000
G	0.442	1:20000
H	0.128	Blank control

ELISA Test. Coating original concentration...