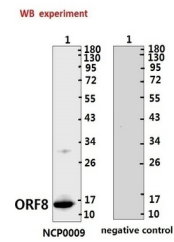


Product Datasheet

ORF8 Antibody (orb1274048)

Description	ORF8 Antibody
Species/Host	Rabbit
Reactivity	Virus
Conjugation	Unconjugated
Tested Applications	ELISA, WB
Immunogen	Synthetic peptide located within the center of SARS-CoV-2 (COVID-19) ORF8.
Target	ORF8
Preservatives	PBS with 0.02% sodium azide, 10% glycerol, pH 7.2
Form/Appearance	Liquid
Concentration	batch dependent
Storage	Store at 4°C short term. Aliquot and store at -20°C long term. Avoid freeze-thaw cycles.
Note	For research use only
Application notes	WB: 1:500-1000
Isotype	IgG
Clonality	Polyclonal
NCBI	QHD43422.1
Dilution Range	WB: 1:500-1000
Expiration Date	12 months from date of receipt.



Western Blot
Validation with
Recombinant...