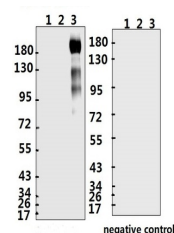


Product Datasheet

SARS-CoV-2 (COVID-19) Spike S1 Antibody (NT1) (orb1274038)

Description	SARS-CoV-2 (COVID-19) Spike S1 Antibody (NT1)
Species/Host	Rabbit
Reactivity	Virus
Conjugation	Unconjugated
Tested Applications	ELISA, WB
Immunogen	Synthetic peptide located within the NT1 of SARS-CoV-2 (COVID-19) Spike S1.
Target	S
Preservatives	PBS with 0.02% sodium azide, 10% glycerol, pH 7.2
Form/Appearance	Liquid
Concentration	batch dependent
Storage	Store at 4°C short term. Aliquot and store at -20°C long term. Avoid freeze-thaw cycles.
Note	For research use only
Application notes	WB: 1:500-1000
Isotype	IgG
Clonality	Polyclonal
NCBI	QHD43416.1
Dilution Range	WB: 1:500-1000
Expiration Date	12 months from date of receipt.



Western Blot Validation with Recombinant...

ELISA experiment

	1	2	
A	0.926	0.151	1:1000
B	0.305	0.134	1:10000
C	0.294	0.119	1:10000
D	0.164	0.127	1:40000
E	0.134	0.114	1:80000
F	0.143	0.123	1:160000
G	0.135	0.111	1:320000
H	0.128	0.103	Blank control

ELISA Test. Coating original concentration...