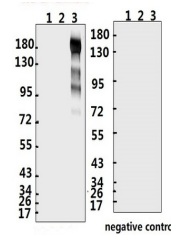


## Product Datasheet

# SARS-CoV-2 (COVID-19) Spike S1 Antibody (IN) (orb1274037)

<b>Description</b>	SARS-CoV-2 (COVID-19) Spike S1 Antibody (IN)
<b>Species/Host</b>	Rabbit
<b>Reactivity</b>	Virus
<b>Conjugation</b>	Unconjugated
<b>Tested Applications</b>	ELISA, WB
<b>Immunogen</b>	Synthetic peptide located within the center of SARS-CoV-2 (COVID-19) Spike S1.
<b>Target</b>	S
<b>Preservatives</b>	PBS with 0.02% sodium azide, 10% glycerol, pH 7.2
<b>Form/Appearance</b>	Liquid
<b>Concentration</b>	batch dependent
<b>Storage</b>	Store at 4°C short term. Aliquot and store at -20°C long term. Avoid freeze-thaw cycles.
<b>Note</b>	For research use only
<b>Application notes</b>	WB: 1:500-1000
<b>Isotype</b>	IgG
<b>Clonality</b>	Polyclonal
<b>NCBI</b>	<a href="#">QHD43416.1</a>
<b>Dilution Range</b>	WB: 1:500-1000
<b>Expiration Date</b>	12 months from date of receipt.



Western Blot Validation with Recombinant...

ELISA experiment

	1	2	
A	1.163	0.135	1:1000
B	0.307	0.129	1:10000
C	0.211	0.118	1:20000
D	0.154	0.1	1:40000
E	0.106	0.143	1:80000
F	0.111	0.441	1:160000
G	0.083	0.106	1:320000
H	0.125	0.101	Blank control

ELISA Test.  
Coating original concentration...