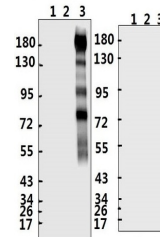


Product Datasheet

SARS-CoV-2 (COVID-19) Spike S2 Antibody (CT) (orb1274035)

Description	SARS-CoV-2 (COVID-19) Spike S2 Antibody (CT)
Species/Host	Rabbit
Reactivity	Virus
Conjugation	Unconjugated
Tested Applications	ELISA, WB
Immunogen	Synthetic peptide located within the C terminus of SARS-CoV-2 (COVID-19) Spike S1.
Target	S
Preservatives	PBS with 0.02% sodium azide, 10% glycerol, pH 7.2
Form/Appearance	Liquid
Concentration	batch dependent
Storage	Store at 4°C short term. Aliquot and store at -20°C long term. Avoid freeze-thaw cycles.
Note	For research use only
Application notes	WB: 1:500-1000
Isotype	IgG
Clonality	Polyclonal
NCBI	QHD43416.1
Dilution Range	WB: 1:500-1000
Expiration Date	12 months from date of receipt.



Western Blot Validation with Recombinant...

ELISA experiment

	1	2	
A	0.418	0.108	:1:500
B	0.349	0.132	:1:1000
C	0.246	0.154	:1:2000
D	0.182	0.152	:1:4000
E			
F			
G			
H			

ELISA Test.
Coating original concentration...