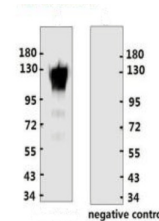


## Product Datasheet

### ACE2 Antibody (orb1274031)

<b>Description</b>	ACE2 Antibody
<b>Species/Host</b>	Rabbit
<b>Reactivity</b>	Virus
<b>Conjugation</b>	Unconjugated
<b>Tested Applications</b>	ELISA, WB
<b>Immunogen</b>	ACE2 recombinant protein
<b>Target</b>	ACE2
<b>Preservatives</b>	PBS with 0.02% sodium azide, 10% glycerol, pH 7.2
<b>Form/Appearance</b>	Liquid
<b>Concentration</b>	batch dependent
<b>Storage</b>	Store at 4°C short term. Aliquot and store at -20°C long term. Avoid freeze-thaw cycles.
<b>Note</b>	For research use only
<b>Application notes</b>	WB: 1:2000-10000
<b>Isotype</b>	IgG
<b>Clonality</b>	Polyclonal
<b>NCBI</b>	<b>Q9BYF1</b>
<b>Dilution Range</b>	WB: 1:2000-10000
<b>Expiration Date</b>	12 months from date of receipt.



Western Blot Validation with Recombinant...