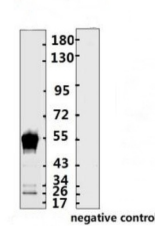


## Product Datasheet

# SARS-CoV-2 (COVID-19) Nucleocapsid Monoclonal Antibody [N013] (orb1274017)

|                            |  |
|----------------------------|--|
| <b>Description</b>         | SARS-CoV-2 (COVID-19) Nucleocapsid Monoclonal Antibody [N013]                            |
| <b>Species/Host</b>        | Human  |
| <b>Reactivity</b>          | Virus  |
| <b>Conjugation</b>         | Unconjugated   |
| <b>Tested Applications</b> | ELISA, WB  |
| <b>Immunogen</b>           | Nucleocapsid recombinant protein   |
| <b>Target</b>              | N  |
| <b>Preservatives</b>       | PBS with 0.02% sodium azide, 10% glycerol, pH 7.2  |
| <b>Form/Appearance</b>     | Liquid   |
| <b>Concentration</b>       | batch dependent  |
| <b>Storage</b>             | Store at 4°C short term. Aliquot and store at -20°C long term. Avoid freeze-thaw cycles. |
| <b>Note</b>                | For research use only  |
| <b>Application notes</b>   | ELISA: 1:160000; WB: 1:2000~3000   |
| <b>Clonality</b>           | Monoclonal   |
| <b>NCBI</b>                | <a href="#">QHD43423.2</a>   |
| <b>Dilution Range</b>      | ELISA: 1:160000; WB: 1:2000~3000   |
| <b>Expiration Date</b>     | 12 months from date of receipt.  |



Western Blot Validation with Recombinant...

ELISA experiment

|   | 1     |               |
|---|-------|---------------|
| A | 2.51  | 1:10000       |
| B | 2.337 | 1:20000       |
| C | 2.143 | 1:40000       |
| D | 1.58  | 1:80000       |
| E | 1.091 | 1:160000      |
| F | 0.732 | 1:320000      |
| G | 0.504 | 1:640000      |
| H | 0.128 | Blank control |

ELISA Test.  
Coating original concentration...