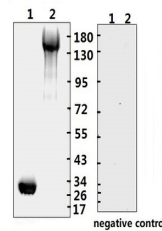


## Product Datasheet

# SARS-CoV-2 (COVID-19) Spike RBD Monoclonal Antibody [B001] (orb1274013)

<b>Description</b>	SARS-CoV-2 (COVID-19) Spike RBD Monoclonal Antibody [B001]
<b>Species/Host</b>	Human
<b>Reactivity</b>	Virus
<b>Conjugation</b>	Unconjugated
<b>Tested Applications</b>	ELISA, NeA, WB
<b>Immunogen</b>	S-RBD recombinant protein
<b>Target</b>	S
<b>Preservatives</b>	PBS with 0.02% sodium azide, 10% glycerol, pH 7.2
<b>Form/Appearance</b>	Liquid
<b>Concentration</b>	batch dependent
<b>Storage</b>	Store at 4°C short term. Aliquot and store at -20°C long term. Avoid freeze-thaw cycles.
<b>Note</b>	For research use only
<b>Application notes</b>	ELISA: 1:320000; WB: 1:1000~2000
<b>Clonality</b>	Monoclonal
<b>NCBI</b>	<a href="#">QHD43416.1</a>
<b>Dilution Range</b>	ELISA: 1:320000; WB: 1:1000~2000
<b>Expiration Date</b>	12 months from date of receipt.



Western Blot Validation with Recombinant...

ELISA experiment

	1	2	
A	2347	2389	:1:1000
B	2058	2216	:1:10000
C	2297	2159	:1:20000
D	2441	2624	:1:40000
E	2104	2292	:1:80000
F	1784	1713	:1:160000
G	1188	1213	:1:320000
H	0.105	0.086	Blank control

ELISA Test. Coating original concentrati...