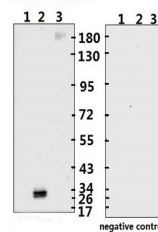


Product Datasheet

SARS-CoV-2 (COVID-19) Spike RBD Monoclonal Antibody [B002] (orb1274009)

Description	SARS-CoV-2 (COVID-19) Spike RBD Monoclonal Antibody [B002]
Species/Host	Human
Reactivity	Virus
Conjugation	Unconjugated
Tested Applications	ELISA, NeA, WB
Immunogen	S-RBD recombinant protein
Target	S
Preservatives	PBS with 0.02% sodium azide, 10% glycerol, pH 7.2
Form/Appearance	Liquid
Concentration	batch dependent
Storage	Store at 4°C short term. Aliquot and store at -20°C long term. Avoid freeze-thaw cycles.
Note	For research use only
Application notes	ELISA: ECD-1:320000, RBD-1:80000; WB: 1:1000~2000
Clonality	Monoclonal
NCBI	QHD43416.1
Dilution Range	ELISA: ECD-1:320000, RBD-1:80000; WB: 1:1000~2000
Expiration Date	12 months from date of receipt.



Western Blot Validation with Recombinant...

ELISA experiment

	1	2	
A	2.208	2.811	1:1000
B	2.159	2.336	1:10000
C	2.434	2.09	1:20000
D	2.37	1.871	1:40000
E	2.082	1.201	1:80000
F	1.756	0.777	1:160000
G	1.234	0.438	1:320000
H	0.337	0.068	Blank control

ELISA Test. Coating original concentrati...