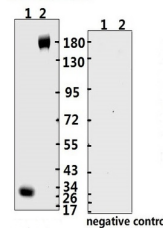


## Product Datasheet

# SARS-CoV-2 (COVID-19) Spike RBD Monoclonal Antibody [B003] (orb1274005)

<b>Description</b>	SARS-CoV-2 (COVID-19) Spike RBD Monoclonal Antibody [B003]
<b>Species/Host</b>	Human
<b>Reactivity</b>	Virus
<b>Conjugation</b>	Unconjugated
<b>Tested Applications</b>	ELISA, NeA, WB
<b>Immunogen</b>	S-RBD recombinant protein
<b>Target</b>	S
<b>Preservatives</b>	PBS with 0.02% sodium azide, 10% glycerol, pH 7.2
<b>Form/Appearance</b>	Liquid
<b>Concentration</b>	batch dependent
<b>Storage</b>	Store at 4°C short term. Aliquot and store at -20°C long term. Avoid freeze-thaw cycles.
<b>Note</b>	For research use only
<b>Application notes</b>	ELISA: ECD-1:320000, RBD-1:80000 WB: 1:1000~2000
<b>Clonality</b>	Monoclonal
<b>NCBI</b>	<a href="#">QHD43416.1</a>
<b>Dilution Range</b>	ELISA: ECD-1:320000, RBD-1:80000 WB: 1:1000~2000
<b>Expiration Date</b>	12 months from date of receipt.



Western Blot Validation with Recombinant...

ELISA experiment

	1	2	
A	2.005	2.55	1:1000
B	1.940	2.453	1:10000
C	1.651	2.292	1:30000
D	1.325	1.850	1:40000
E	0.976	1.385	1:50000
F	0.668	0.951	1:160000
G	0.34	0.541	1:320000
H	0.167	0.113	Blank control

ELISA Test. Coating original concentrati...