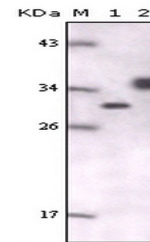


## Product Datasheet

### gfp Antibody (orb1273735)

<b>Description</b>	gfp Antibody
<b>Species/Host</b>	Mouse
<b>Conjugation</b>	Unconjugated
<b>Tested Applications</b>	ELISA, WB
<b>Immunogen</b>	Ni-NTA purified full-length recombinant GFP-His expressed in E. Coli strain BL21 (DE3).
<b>Target</b>	gfp
<b>Preservatives</b>	Purified antibody in PBS containing 0.03% sodium azide.
<b>Concentration</b>	batch dependent
<b>Storage</b>	GFP monoclonal antibody can be stored at -20°C, stable for one year. As with all antibodies care should be taken to avoid repeated freeze thaw cycles. Antibodies should not be exposed to prolonged high temperatures.
<b>Note</b>	For research use only
<b>Application notes</b>	Western Blot:1:500 - 1:2,000 ELISA:Propose dilution 1:10,000.Determining optimal working dilutions by titration test.
<b>Isotype</b>	IgG2a
<b>Clonality</b>	Monoclonal
<b>Uniprot ID</b>	<a href="#">B6UPG7</a>
<b>NCBI</b>	<a href="#">YP_002302326.1</a>
<b>Dilution Range</b>	Western Blot:1:500 - 1:2,000 ELISA:Propose dilution 1:10,000.Determining optimal working dilutions by titration test.
<b>Expiration Date</b>	12 months from date of receipt.



Western blot analysis using GFP monoclon...