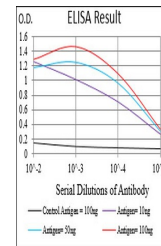


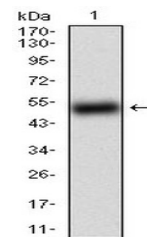
## Product Datasheet

### BACE1 Antibody (orb1273668)

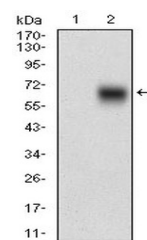
<b>Description</b>	BACE1 Antibody
<b>Species/Host</b>	Mouse
<b>Reactivity</b>	Human, Mouse, Rat
<b>Conjugation</b>	Unconjugated
<b>Tested Applications</b>	ELISA, FC, ICC, WB
<b>Immunogen</b>	Rurified recombinant fragment of human BACE1 (AA: 112-324) expressed in E. Coli.
<b>Target</b>	BACE1
<b>Preservatives</b>	Purified antibody in PBS with 0.05% sodium azide.
<b>Concentration</b>	batch dependent
<b>Storage</b>	BACE monoclonal antibody can be stored at -20°C, stable for one year. As with all antibodies care should be taken to avoid repeated freeze thaw cycles. Antibodies should not be exposed to prolonged high temperatures.
<b>Note</b>	For research use only
<b>Application notes</b>	ELISA: 1/10000Western Blot: 1/500 - 1/2000ICC: 1/200 - 1/1000Flow Cytometry: 1/200 - 1/400
<b>Isotype</b>	IgG1
<b>Clonality</b>	Monoclonal
<b>Uniprot ID</b>	<a href="#">P56817</a>
<b>Dilution Range</b>	ELISA: 1/10000Western Blot: 1/500 - 1/2000ICC: 1/200 - 1/1000Flow Cytometry: 1/200 - 1/400
<b>Expiration Date</b>	12 months from date of receipt.



Control Antigen (100 ng); Purple line: A...



Western blot analysis using BACE1 mAb ag...



Western blot analysis using BACE1 mAb ag...