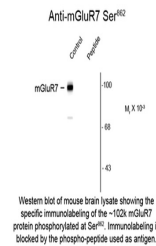


## Product Datasheet

### Grm7 Antibody (orb1273658)

<b>Description</b>	Grm7 Antibody
<b>Species/Host</b>	Rabbit
<b>Reactivity</b>	Mouse, Rat
<b>Conjugation</b>	Unconjugated
<b>Tested Applications</b>	WB
<b>Immunogen</b>	Phosphopeptide corresponding to amino acid residues surrounding phospho-Ser862 of rat mGluR7.
<b>Target</b>	Grm7
<b>Form/Appearance</b>	Liquid
<b>Concentration</b>	batch dependent
<b>Note</b>	For research use only
<b>Clonality</b>	Polyclonal
<b>MW</b>	102
<b>Uniprot ID</b>	<a href="#">P35400</a>
<b>NCBI</b>	<a href="#">P35400</a>
<b>Expiration Date</b>	12 months from date of receipt.



Western blot of mouse brain lysate showing the specific immunolabeling of the ~102k mGluR7 protein phosphorylated at Ser862. Immunolabeling is blocked by the phospho-peptide used as antigen.