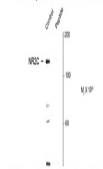


Product Datasheet

Grin2c Antibody (orb1273657)

Description	Grin2c Antibody
Species/Host	Rabbit
Reactivity	Mouse, Rat
Conjugation	Unconjugated
Tested Applications	WB
Immunogen	Synthetic phospho-peptide surrounding the phospho Ser1096 of the NR2C-subunit of rat NMDA receptor.
Target	Grin2c
Form/Appearance	Liquid
Concentration	batch dependent
Note	For research use only
Clonality	Polyclonal
MW	140
Uniprot ID	Q00961
NCBI	Q00961
Expiration Date	12 months from date of receipt.

Anti-Phospho Ser¹⁰⁹⁶ NMDA NR2C Subunit



Western blot of mouse brain lysate showing specific immunoreactivity of the +14kD NR2C subunit of the NMDA receptor phosphorylated at Ser¹⁰⁹⁶. In the second lane immunoreactivity is blocked by preabsorption with the phospho-peptide (Peptide) used as antigen.

Western blot of mouse brain lysate showing specific immunoreactivity of the +14kD NR2C subunit of the NMDA receptor phosphorylated at Ser¹⁰⁹⁶. In the second lane immunoreactivity is blocked by preabsorption with the phospho-peptide (Peptide) used as antigen.