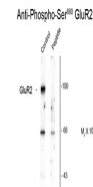


## Product Datasheet

### Gria2 Antibody (orb1273650)

|                            |  |
|----------------------------|--|
| <b>Description</b>         | Gria2 Antibody   |
| <b>Species/Host</b>        | Rabbit   |
| <b>Reactivity</b>          | Rat  |
| <b>Conjugation</b>         | Unconjugated   |
| <b>Tested Applications</b> | WB   |
| <b>Immunogen</b>           | Phosphopeptide corresponding to amino acid residues surrounding the phospho-Ser880 of rat GluR2. |
| <b>Target</b>              | Gria2  |
| <b>Form/Appearance</b>     | Liquid   |
| <b>Concentration</b>       | batch dependent  |
| <b>Note</b>                | For research use only  |
| <b>Clonality</b>           | Polyclonal   |
| <b>MW</b>                  | 100  |
| <b>Uniprot ID</b>          | <a href="#">P19491</a>   |
| <b>NCBI</b>                | <a href="#">P19491</a>   |
| <b>Expiration Date</b>     | 12 months from date of receipt.  |



Western blot of rat brain homogenate showing specific immunoblotting of the -100 GluR2 protein phosphorylated at Ser880 (control). Immunoblotting is blocked by preincubation with the phospho-peptide used as antigen (Peptide) but not by the corresponding non-phosphorylated peptide (non-phospho).

Western blot of rat brain homogenate showing specific immunoblotting of the -100 GluR2 protein phosphorylated at Ser880 (control). Immunoblotting is blocked by preincubation with the phospho-peptide used as antigen (Peptide) but not by the corresponding non-phosphorylated peptide (non-phospho).