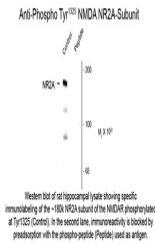


## Product Datasheet

### Grin2a Antibody (orb1273649)

<b>Description</b>	Grin2a Antibody
<b>Species/Host</b>	Rabbit
<b>Reactivity</b>	Mouse, Rat
<b>Conjugation</b>	Unconjugated
<b>Tested Applications</b>	WB
<b>Immunogen</b>	Phosphopeptide corresponding to amino acid residues surrounding the phospho-Tyr1325 of rat NMDA NR2A.
<b>Target</b>	Grin2a
<b>Form/Appearance</b>	Liquid
<b>Concentration</b>	batch dependent
<b>Note</b>	For research use only
<b>Clonality</b>	Polyclonal
<b>MW</b>	180
<b>Uniprot ID</b>	<a href="#">Q00959</a>
<b>NCBI</b>	<a href="#">Q00959</a>
<b>Expiration Date</b>	12 months from date of receipt.



Western blot of rat hippocampal lysate showing specific immunoreactivity of the 180 kDa subunit of the NMDA receptor phosphorylated at Tyr1325 (Control). In the second lane, immunoreactivity is blocked by preabsorption with the phospho-peptide (Peptide) used as antigen.