

## Product Datasheet

### Creb1 Antibody (orb1273581)

**Description**

Creb1 Antibody

**Species/Host**

Rabbit

**Reactivity**

Bovine, Canine, Human, Mouse, Rat, Sheep, Zebrafish

**Conjugation**

Unconjugated

**Tested Applications**

WB

**Immunogen**

Phosphopeptide corresponding to amino acid residues surrounding the phospho-Ser133 of rat CREB.

**Target**

Creb1

**Form/Appearance**

Liquid

**Concentration**

batch dependent

**Storage**

CREB antibody can be stored at -20°C and is stable at -20°C for at least 1 year.

**Note**

For research use only

**Application notes**

The antibody has been directly tested for reactivity in Western blots with rat tissue. It is anticipated that the antibody will also react with bovine, canine, chicken, human, mouse, non-human primate, rat, sheep, Xenopus and zebra fish based on the fact that these species have 100% homology with the amino acid sequence used as antigen.

**Clonality**

Polyclonal

**MW**

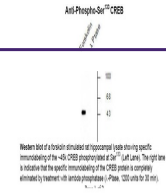
45

**Uniprot ID**
[P15337](#)
**NCBI**
[P15337](#)
**Dilution Range**

The antibody has been directly tested for reactivity in Western blots with rat tissue. It is anticipated that the antibody will also react with bovine, canine, chicken, human, mouse, non-human primate, rat, sheep, Xenopus and zebra fish based on the fact that these species have 100% homology with the amino acid sequence used as antigen.

**Expiration Date**

12 months from date of receipt.



Western blot of a forskolin stimulated rat hippocampal lysate showing specific immunoreactivity of the Anti-Phospho-Ser133 CREB antibody. The right lane is a control for the specific immunoreactivity of the CREB protein is completely eliminated by treatment with antiserum (pre-adsorption). (Phospho-Ser133 antibody 100 ng/ml)