
Product Datasheet

Gsk3b Antibody (orb1273574)

Description

Gsk3b Antibody

Species/Host

Rabbit

Reactivity

Bovine, Canine, Frog, Gallus, Human, Mouse, Rat, Zebrafish

Conjugation

Unconjugated

Tested Applications

WB

Immunogen

Phosphopeptide corresponding to amino acid residues surrounding the phospho-Ser9 of GSK3b.

Target

Gsk3b

Form/Appearance

Liquid

Concentration

batch dependent

Storage

Glycogen synthase antibody can be stored at -20°C and is stable at -20°C for at least 1 year.

Note

For research use only

Application notes

The antibody has been directly tested for reactivity in Western blots with rat tissue. It is anticipated that the antibody will react with human, mouse, chicken, bovine, canine, non-human primate, Zebra fish and Xenopus based on the fact that these species have 100% homology with the amino acid sequence used as antigen.

Clonality

Polyclonal

MW

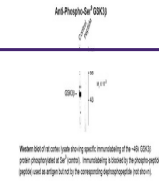
46

Uniprot ID
[P18266](#)
NCBI
[P18266](#)
Dilution Range

The antibody has been directly tested for reactivity in Western blots with rat tissue. It is anticipated that the antibody will react with human, mouse, chicken, bovine, canine, non-human primate, Zebra fish and Xenopus based on the fact that these species have 100% homology with the amino acid sequence used as antigen.

Expiration Date

12 months from date of receipt.



Western blot of rat cortex lysate showing specific immunoreactivity of the GSK3b antibody (phospho-Ser9 of GSK3b) immunoreactivity (GSK3b) to the phospho-peptide antigen used as antigen source for antibody development and assay.

Western blot of rat cortex lysate showing specific immunoreactivity of the GSK3b antibody (phospho-Ser9 of GSK3b) immunoreactivity (GSK3b) to the phospho-peptide antigen used as antigen source for antibody development and assay.