
Product Datasheet

Ywhab Antibody (orb1273572)

Description

Ywhab Antibody

Species/Host

Rabbit

Reactivity

Bovine, Canine, Frog, Gallus, Human, Mouse, Rat, Sheep, Zebrafish

Conjugation

Unconjugated

Tested Applications

IHC, WB

Immunogen

Phosphopeptide corresponding to amino acid residues surrounding the phospho-Ser58 of rat 14-3-3 protein.

Target

Ywhab

Form/Appearance

Liquid

Concentration

batch dependent

Storage

14-3-3 antibody can be stored at -20°C and is stable at -20°C for at least 1 year.

Note

For research use only

Application notes

The antibody has been directly tested for reactivity in Western blots with human and rat tissue. It is anticipated that the antibody will react with bovine, canine, chicken, mouse, non-human primates, sheep, Xenopus and zebra fish based on the fact that these species have 100% homology with the amino acid sequence used as antigen for this antibody.

Clonality

Polyclonal

MW

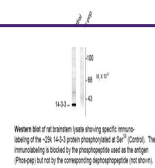
29

Uniprot ID
[P35213](#)
NCBI
[P35213](#)
Dilution Range

The antibody has been directly tested for reactivity in Western blots with human and rat tissue. It is anticipated that the antibody will react with bovine, canine, chicken, mouse, non-human primates, sheep, Xenopus and zebra fish based on the fact that these species have 100% homology with the amino acid sequence used as antigen for this antibody.

Expiration Date

12 months from date of receipt.

 Anti-Phospho-Ser⁵⁸ 14-3-3 Protein

 Western blot of rat brainstem lysate showing specific immunoreactivity of the anti-14-3-3 protein phosphopeptide at Ser⁵⁸ (Control). The immunoreactivity is detected by the immunoprecipitate used as the antigen (Phospho) but not by the corresponding nonphosphopeptide (not shown).